



Product Features:

1. Stainless steel body structure
2. LED indication
3. Size is the smallest
4. Short circuit protection, reverse polarity and overload protection
5. No moving parts, easy to maintain
6. Easy to install, M12 connector output
7. Various pipes can use only one type of sensor.
8. The set-point can be adjust continuous
9. Almost no pressure loss
10. Protect level Ip67

Applications:

Shut-off system	Coolant	Recycled water	Cutting fluid	Lubricating oil
-----------------	---------	----------------	---------------	-----------------

Specification:

Measure range:	Water:3--300cm/s; Air:200--3000cm/s; Oil:3--300cm/s
Accuracy:	±1~±10cm/s
Settling time:	3 minutes
Pressure:	100 Bar
Media temperature:	-20 to 80℃
Process connections	G1/2、 G1/4 Male thread / M18 Female thread
Output signal	PNP / NPN / Relay
Power:	24VDC
Sensor length:	15mm
Indication:	LED indication
Consumption current:	<50mA
Setting:	Potentiometer
Response time:	2(2~10)s
Load:	Relay:30VDC/5A,250VAC/5A
Max. temperature gradient of medium:	300K/min
Output protect:	Reverse/Short/Overload
Protection:	IP67
Power connector:	M12 with 1m cable
Material:	Sensor:ANSI316L Body:ANSI316L

Electrical connection diagram

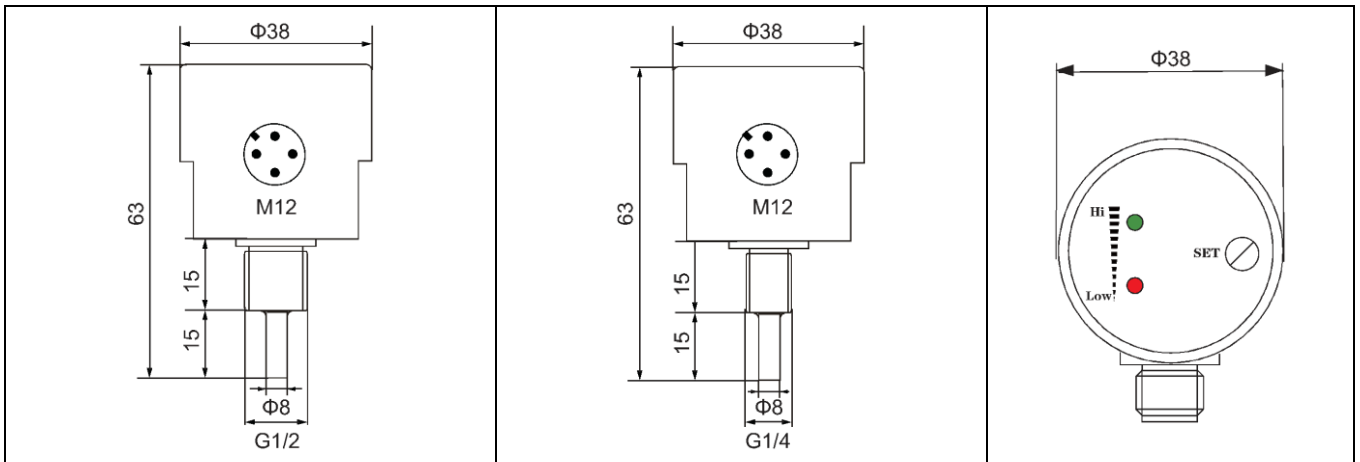


Cable color

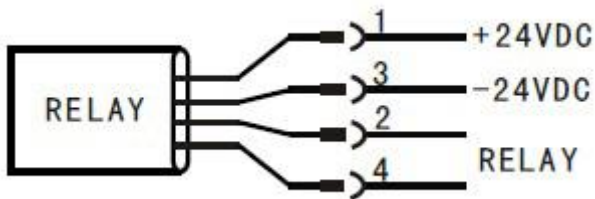
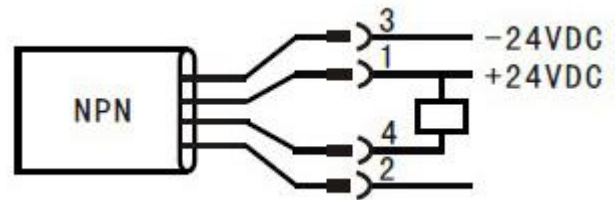
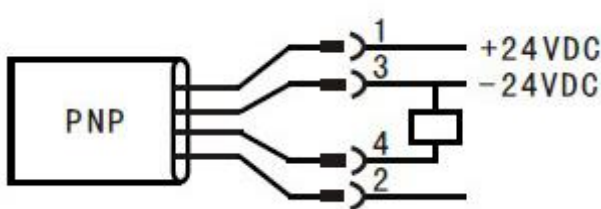
信号	+Ub	0V	S1	S2
线色	棕	蓝	白	黑
4针pin	1	3	2	4

Thermal Flow Switch RH301 Series

Dimensions: (mm)



Electrical wiring diagram:



Special Note:

24VDC power supply, brown connected to the positive and blue to the negative flow switch transistor or relay output default is higher than the set point conduction or action; Conversely connected to the positive blue, brown, then negative, flow switch transistor or relay output is below the set point conduction or action.

Order Code:

